

www.ditex.it - info@ditex.it

FUEL INJECTION SERVICE SOLUTIONS

# ditex

Company Presentation

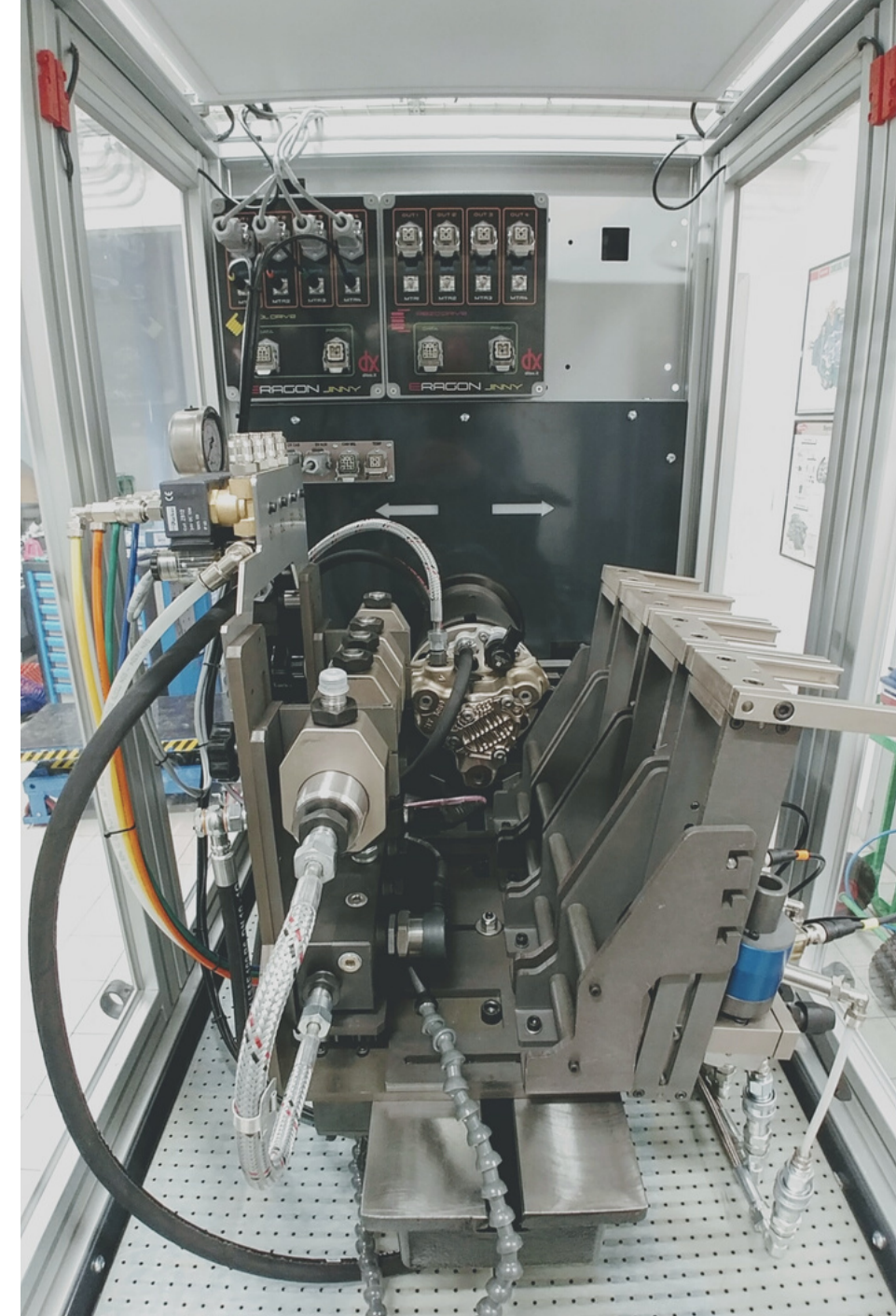
01



#NOVADITEX  
#MORETHANAPRODUCT

# Index

1. THE MISSION
2. THE HISTORY
3. MARKETS AND SALES
4. EQUIPMENT AND SPAREPARTS
5. TRAINING AND SUPPORT
6. THE OFFER
7. THE CERTIFICATION
8. CONTACTS



The best way to know  
who we are and what we do  
[www.ditex.it](http://www.ditex.it) - [info@ditex.it](mailto:info@ditex.it)

[www.ditex.it](http://www.ditex.it) - [info@ditex.it](mailto:info@ditex.it)

## THE MISSION

**DITEX** has been actively present in the fuel injection market for over **40 years**, we supply new generation solutions and services for the professional injector repair network world wide.

Our mission is to offer a full portfolio of specialised technical training, market leading test and repair equipment backed up with a full repair parts program. This offers our clients accurate diagnosis and successful first time repair of the widest range of diesel systems.

We trust in **collaboration** and cooperation as a key value within a qualified network in order to achieve high quality offer for services and products to end users. These are our guidelines for a **favourable growth**.



# THE HISTORY

..Our adventure started in 1976 with the founding members, who previously occupied key management positions in leading Injection System Producers...

**1976 DITEX SNC Import-Export**

**1979 From DITEX SNC to DITEX SAS**

Import-Export

**1981 From DITEX SAS to NOVA DITEX SRL**

Diesel Injection Engines Spare Parts Trade

**1991 NOVA DITEX SRL**

Headquarter and members variation

**1997 DPCN**

First Injection Systems Testing Equipment

**2001 CRI 1000 & CPT 1000**

First Common Rail Testing Equipment

**2004 DITEX TECHNOLOGIES SRL**

For better management of research and development of diesel/petrol fuel injection systems and engines diagnosis and repair equipment

**2008 EDX611**

Universal Diesel Test Bench with graduated tubes

**2009 The current HEADQUARTER**

Località Mandella, Peschiera del Garda (VR)

**2010 DITEX SERVICE**

Workshops network made up of customers equipped with diagnostic and repair tools developed by Ditex

**2012 EDX611D**

Universal Digital Diesel Test Bench

**2016 40th ANNIVERSARY**

**2017 GEA**

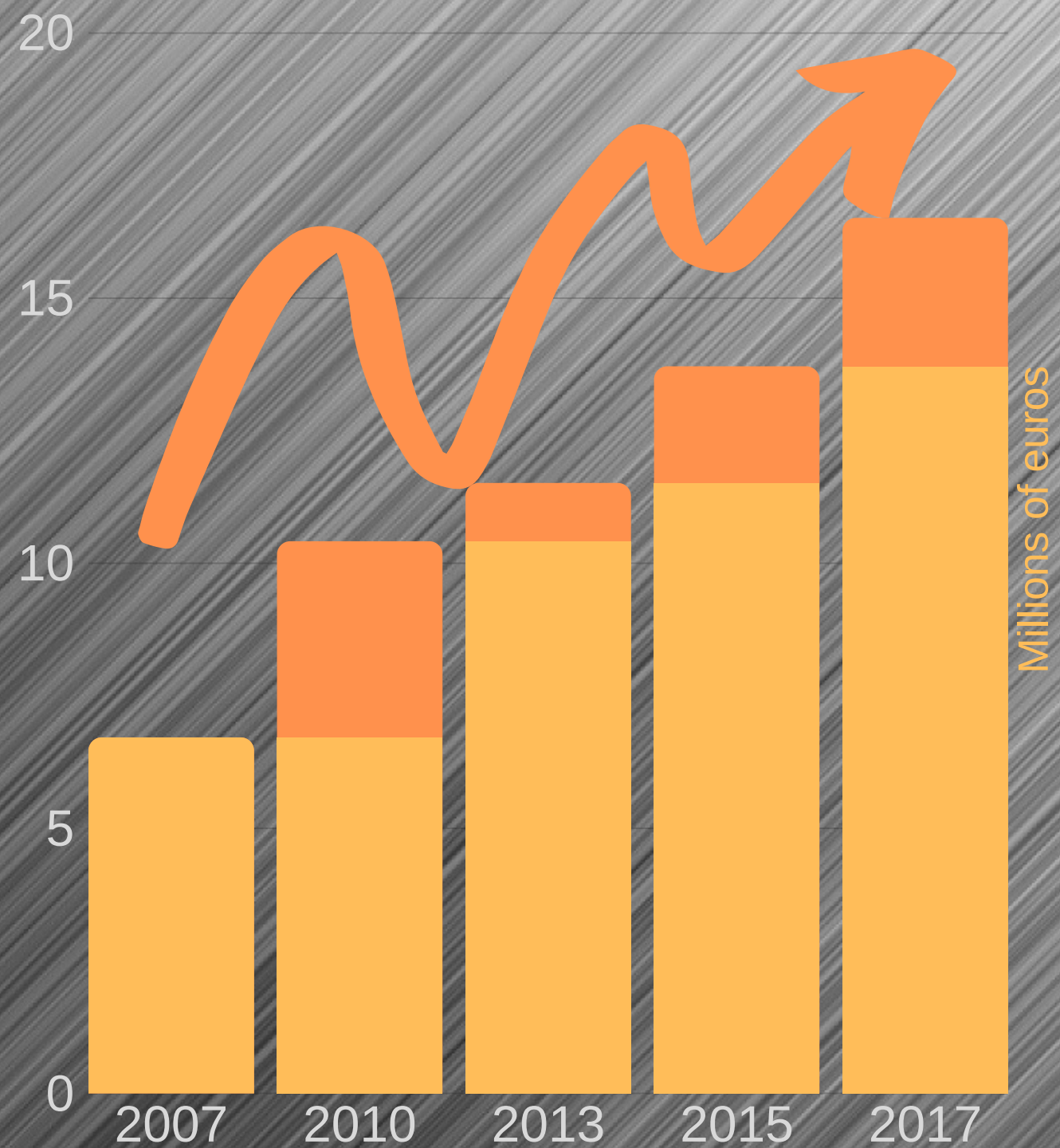
Electronic Common-Rail Pump Tester

**2019 EDX711 JINNY**

Customized Test Bench

The Current Headquarter





## MARKETS AND SALES

**We are very well established** in our **home market** with Sales Executives as well as authorised regional distributors.

**We export worldwide to over 50 countries** through competent distributors who offer commercial and technical support to customers which makes the **DX Brand** appreciated.

## EQUIPMENT AND SPAREPARTS

Our **test equipment solutions** serve all different **brands** and offer a **reliable diagnosis** and **repair concept**.

The user friendly approach based on a very high level of engineering makes Ditex product appreciated worldwide.

We offer a **very large assortment** of **genuine** and **non genuine spare parts**, so we can reply **immediately** to the enquiries we receive from our **customers**.

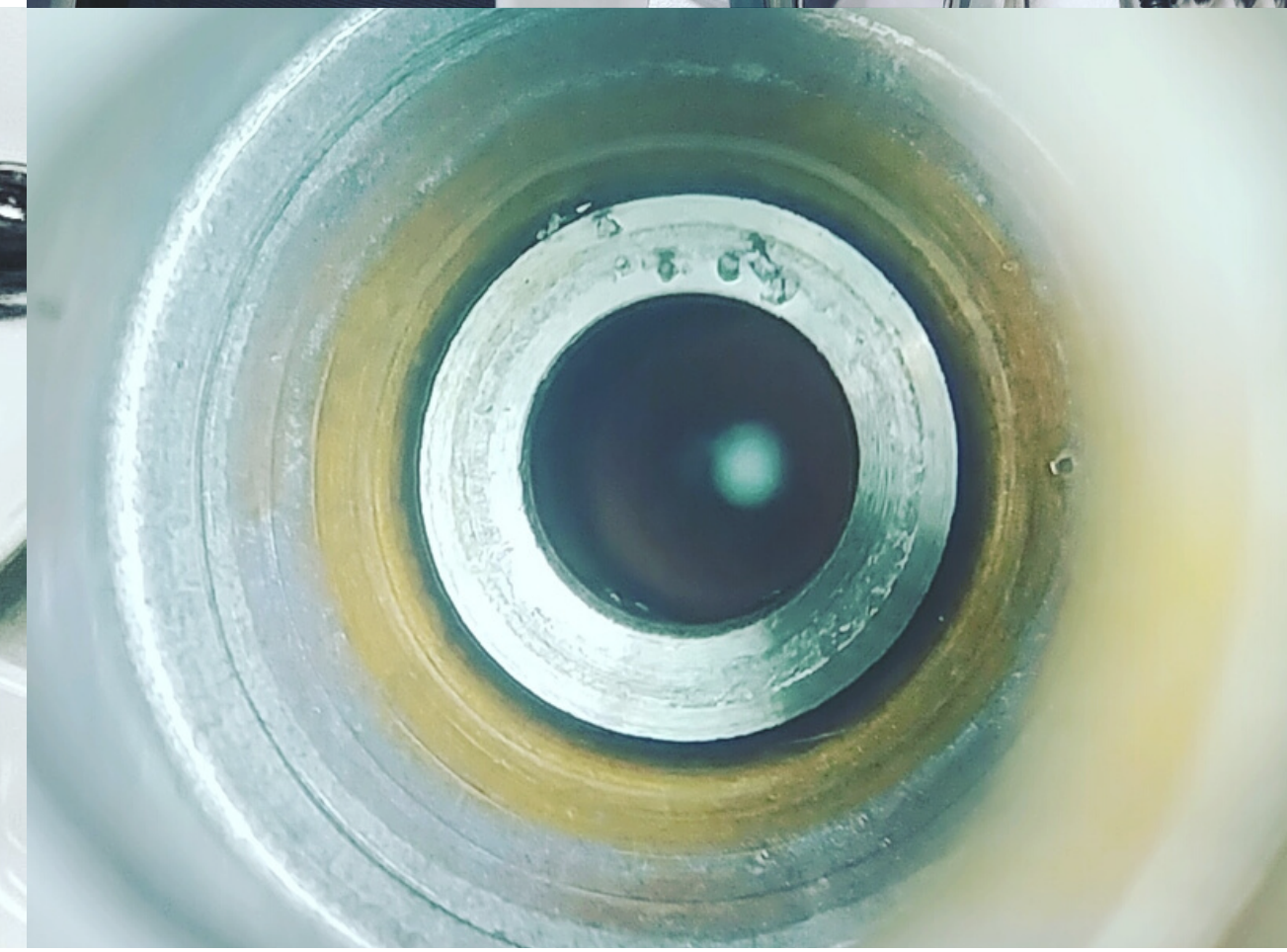
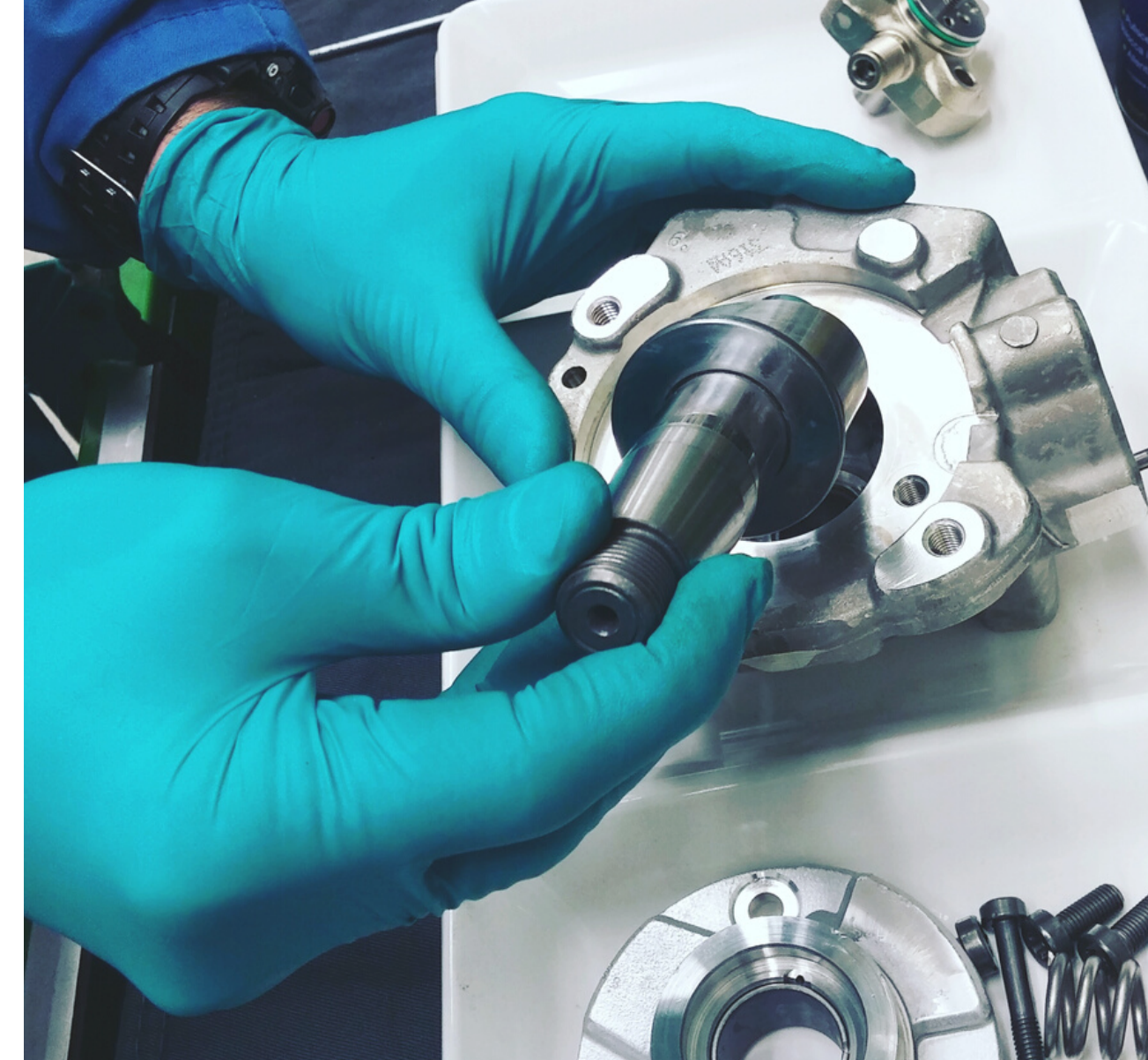
We deliver **daily** to more **100 customers** all over the world with quick delivery services in partnership with several forwarding agents.



## TRAINING AND SUPPORT

Through the **experience** coming from over 40 Years in this business, we offer our customers **commercial assistance** and **technical support** to help them solve their daily issues.

To provide the necessary knowledge to the fuel injection specialists, we offer **technical training in 5 different languages**, supported by teachers who join their experience to the technical information displayed during these sessions.





## THE OFFER

DITEX..

..is **perfect partner for any fuel injection specialist** who wants to have a professional and high quality technical level approach.

OUR COMPLETE OFFER..

..starting from Technical information and training well supported by reliable, user friendly and high technical level equipment and tools and finally implemented by a large range of a genuine and non genuine spare parts, **is the best solution in the market.**

JOIN THE DITEX NETWORK



## THE CERTIFICATION

**Nova Ditex** is always paying attention to the needs of its customers, ensuring an organizational system, whose qualifications meet the requirements of the UNI ISO 9001.

Nowadays it is in place an internal adaptation to ISO9001:2015 standard.

The requirements of the regulation apply to all the company process, from the production to the sales and the purchasing management.

All processes are documented and results are recorded on specific forms.



## **DITEX GROUP**

**The main switchboard +390456401191**

**Fax +390457552215**

Domestic Market +390456401656

Accountancy +390456403991

Customer Care +390456403990

[www.ditex.it](http://www.ditex.it)

[info@ditex.it](mailto:info@ditex.it)

[sales@ditex.it](mailto:sales@ditex.it) – Commercial requests

[amministrazione@ditex.it](mailto:amministrazione@ditex.it) – Accountancy requests

[workshop@ditex.it](mailto:workshop@ditex.it) – Technical support



# **ditex**

Località Mandella n. 38

Peschiera del Garda

37019 Verona (Italy)

[www.ditex.it](http://www.ditex.it) - [info@ditex.it](mailto:info@ditex.it)